

**From:** [Michelle Benson](#)  
**To:** [pghig@lists.wisc.edu](mailto:pghig@lists.wisc.edu)  
**Subject:** PGHIG September Newsletter  
**Date:** Wednesday, September 25, 2019 10:45:00 AM  
**Attachments:** [image001.png](#)  
[image005.png](#)  
[image007.png](#)  
[image010.png](#)  
[image008.png](#)  
[image009.png](#)

---

## Pharmacy Global Health Interest Group September Newsletter

Hello PGHIG Members!

Welcome to the first Pharmacy Global Health Interest Group (PGHIG) Newsletter! Inside you'll find updates, announcements, public and global health program details, deadline reminders, and other important information. We'll also be featuring students and the different programs they have participated in to give you an idea of all the opportunities available. If you ever have any questions, please feel free to reach out to any of the members of the executive board.



## From the Co-Presidents:

**Katelyn ([kereiter2@wisc.edu](mailto:kereiter2@wisc.edu)) and Jenna ([jciesielski@wisc.edu](mailto:jciesielski@wisc.edu))**

- PGHIG is hoping to gather information on the different public health and global health programs that students have participated in, and we would greatly appreciate your help in this process. Please take a few minutes to fill out the survey at the link below to tell us about any programs or opportunities you have been involved in. Thank you!  
[https://uwmadison.co1.qualtrics.com/jfe/form/SV\\_3OglxdORPByxe7z](https://uwmadison.co1.qualtrics.com/jfe/form/SV_3OglxdORPByxe7z)
- Are you creative? Have an idea for a new PGHIG logo or design? Or do you have an idea for a new name for our organization? Submit your design and name ideas to us and we will have members vote for their favorite at a meeting later this semester!
- If you are interested in receiving periodic emails with global health related events and opportunities around campus you can join the GHI Global Health Events + mailing list. To do so either email [globalhealth@ghi.wisc.edu](mailto:globalhealth@ghi.wisc.edu) or use this [form](#)

## From the Secretary: Moua Lee

- Thank you to everyone who attended our meeting on Wednesday night! And thank you to our speakers for sharing their experiences! Please check out the Student Features section below for a recap of our speakers and to learn more about the programs they participated in!
- Mark your calendars for the PGHIG October and November meetings:
  - **October 22 from 12:00-1:00pm:** Karen and students will discuss the DPH-2 Summer Service Learning Trips
  - November 25th: Dr. David Kiefer will discuss his Integrative Health practice and indigenous medicine/natural products



**From the Treasurer:**  
**Cait Albrecht, [calbrecht@wisc.edu](mailto:calbrecht@wisc.edu)**

Reminder: If you would like to become a member of PGHIG, our yearly dues are \$5. This money is collected by me!

Please watch out for a donut fundraiser later on in the semester!



## From the Global Health Liaison: Hailey Thompson

### **2019 Health Sciences Equity and Diversity Lunch and Learn Series - Fall 2019**

Join our health science community for a series of **free** workshops and conversations focused on topics related to equity, diversity and inclusion that deeply impact our work and our practice.

#### Events

#### **1. ADDRESSING BIAS IN HEALTHCARE**

**Tuesday, October 1 @ 12:00-1:00pm**

Health Sciences Learning Center, Room1335

750 Highland Ave, Madison, WI 53705

## 2. **GO BIG READ: LET'S EAT! FOOD HEALTH**

**Friday, November 1 @ 12:00-1:00pm**

Health Sciences Learning Center, Room 1335 Highland Ave, Madison, WI 53705

## 3. **RURAL HEALTH EQUITY**

**Tuesday, November 19 @ 12:00-1:00pm**

Rennebohm Hall, Room 2006 777

Highland Ave, Madison, WI 53705

For more information visit [https://ce.icep.wisc.edu/ip\\_diversityandequity-fy19-20](https://ce.icep.wisc.edu/ip_diversityandequity-fy19-20)

## **Global Health Community Hour Events**

- **Global Health Opportunities: Oct 1, 2019, 12:00-1:00 PM Room: 2002**

Speakers: Chris Olsen DVM, PhD and Jim Conway MD Come learn about earning the Graduate/Professional Certificate in Global Health. Also learn about faculty-led summer field courses in Thailand, Ecuador, and Uganda, and additional ways to get involved in global health activities.

- **Careers in African Studies: Meet Dr Lara Vojnov (World Health Organization)**

On Monday, September 30, noon, the African Studies Program is hosting Dr Lara Vojnov for a career development event with UW-Madison students.

Dr. Lara Vojnov is the Diagnostics Advisor at the World Health Organization (WHO) and has significant public health experience throughout Africa and Asia. Dr Vojnov will be having an informal conversation session on this day with students about how she pursued her interests and turned it into a career. Students can come with your

various questions - about working in different parts of the world, in international organizations, working on HIV and AIDS issues, and other interests as well!

Join us for lunch (12 noon to 1.00 pm) and conversation at Room 206 Ingraham Hall on Monday, Sept. 30.

Seats are limited, so please reserve your spot by signing up here:  
<https://africa.wisc.edu/event/africanists-at-work-lara-vojnov/>

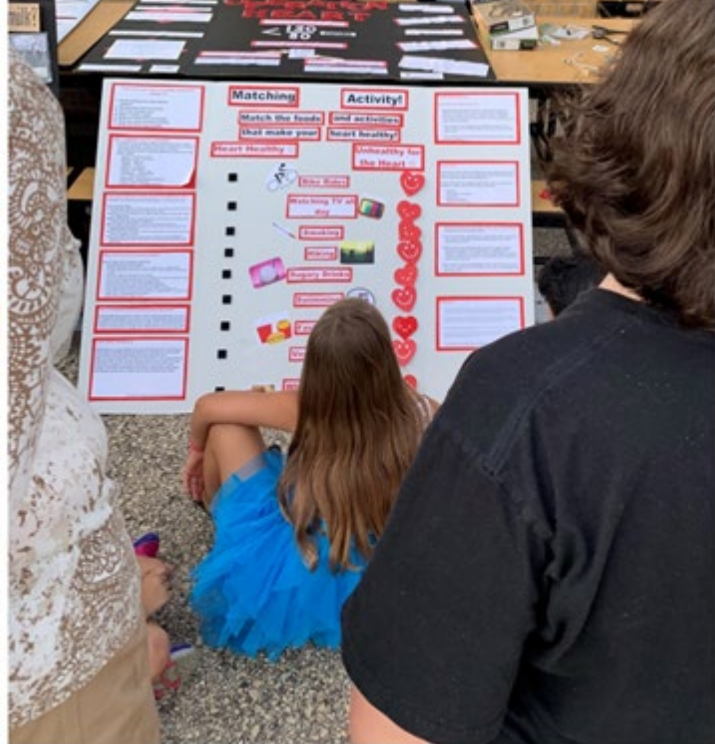
### **APhA-ASP IPSF Student Exchange Program (SEP)**

- International pharmacy experiences organized by the International Pharmaceutical Students' Federation. Community, hospital, clinical, industry, and research opportunities in more than 60 countries!
- For more information check out the SEP website:  
<https://www.ipsf.org/student-exchange-programme>
- Pre-Application Deadline: November 1
- Application: [https://fs8.formsite.com/APhA-ASP/SEP\\_Pre\\_App/index.html](https://fs8.formsite.com/APhA-ASP/SEP_Pre_App/index.html)
- Please feel free to reach out to Jenna ([jciesielski@wisc.edu](mailto:jciesielski@wisc.edu)) if you have any questions about the program or the application process!

For more awesome global health events on campus check out this calendar:

<http://today.wisc.edu/events/feed/359>





## From the Community Outreach Coordinators: Carly Gillis & Rachel Russ

September 10th was the annual Lincoln Health Fair at Lincoln Elementary School. Overall, it was a great success not only did we have great weather, but we had a vast variety of organizations partake in the fair to provide children and families with information about how to eat healthy, exercise, and affordable grocery shopping. Thank you to everyone that helped put on such a great event and we look forward to next year.

Keep your eye out for more outreach opportunities through PGHIG in the near future.



## From the Student Senate Rep: Tabitha Miller

### Deadlines

- Nominate a “Star Student” by Oct. 1st
  - \$5 Badger Market gift card rewarded to nominator and nominee

### Fundraisers

- PDC Jackets and Fleece

### Upcoming Events

- Fall Picnic Wednesday, Sept. 25th 4:30-8pm
  - Nacho bar and yard games
- Next Senate meeting 10/1 in 1116 at 5:30
- Conference on Conferences by WSPS 10/18 at Memorial Union (time TBD)

### FYI

- SCCP looking for 3rd years to be on internship panel at their meeting on Oct. 21st
- Sign up in SAA office for Coffee with Karen



- Candy in SAA Office
  - Donations welcome
  - One piece per visit

Link to senate meeting minutes:

[Student Senate Meeting  
9/10/2019](#)

# Global Health Program Highlights



## Student Exchange Program (SEP) Highlight

Jenna Ciesielski, DPH-3 [jciesielski@wisc.edu](mailto:jciesielski@wisc.edu)

This summer I participated in the Student Exchange Program (SEP) through the International Pharmaceutical Students' Federation (IPSF) - it's a unique and incredible way to experience pharmacy practice in another country. I completed my pharmacy practice in both hospital and clinical settings in Romania. There were also opportunities to explore the city, learn more about the history and culture of the country, and meet other pharmacy students, both from the host country, as well as other international exchange students.

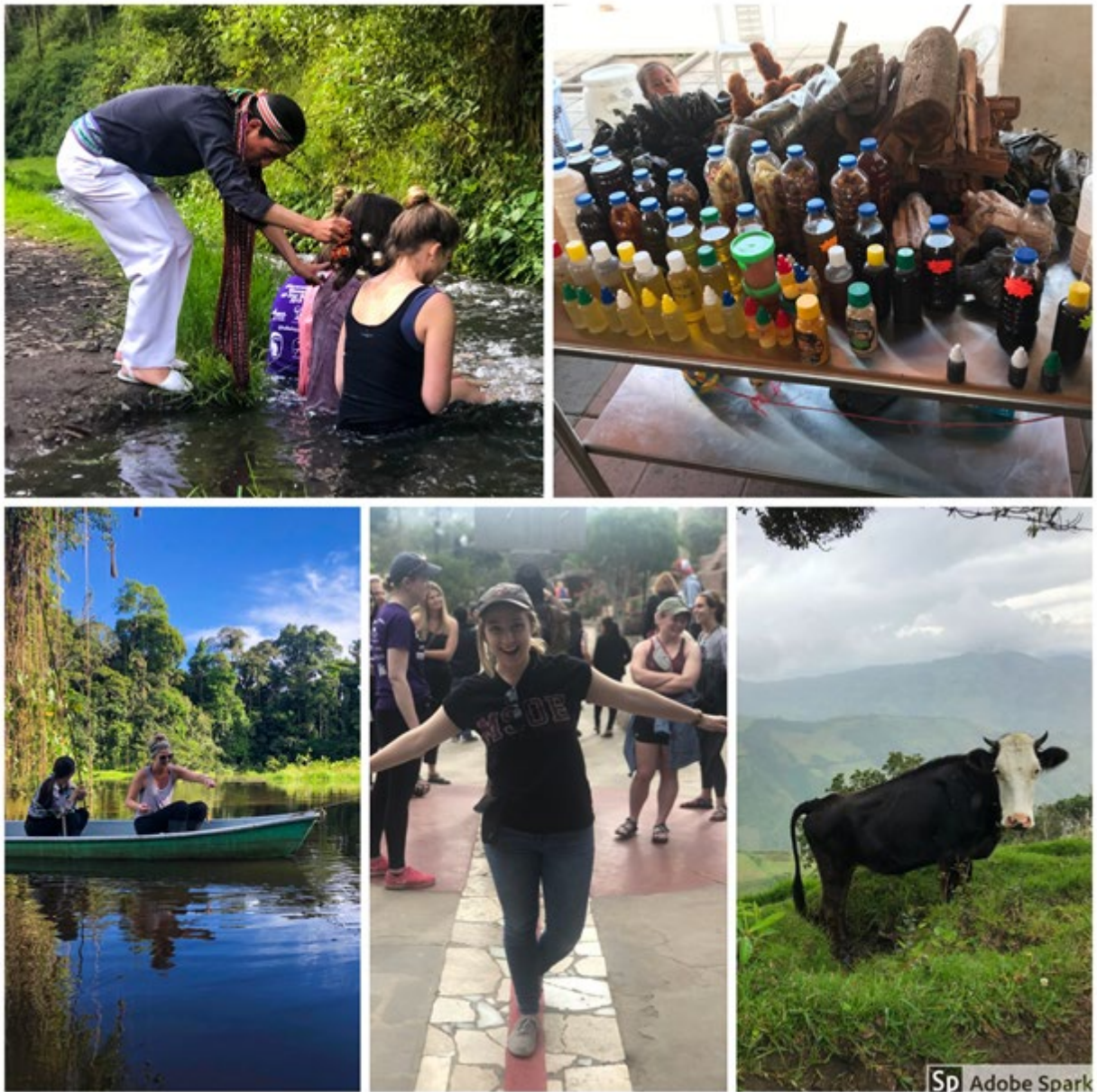


## GHI Uganda Field Course Highlight

Megan Ballew, [mballew@wisc.edu](mailto:mballew@wisc.edu)

Studying in Uganda gave me the opportunity to work closely with other health professional students while expanding my knowledge and appreciation of Uganda's healthcare system as well as our own. We worked alongside Ugandan health workers at a rural hospital and was exposed to a variety of disease states & their medications such as TB, leprosy and malaria. My favorite part was joining hospital staff on community outreach to educate families about HIV/AIDS, maternal health, vaccinations for children, and other public health concerns. We saw a lot of incredible places and animals, but it is truly the health workers, patients and students I met that made my experience unforgettable!





## GHI Ecuador Field Course Highlight

**Megan Andraski, [mandraski@wisc.edu](mailto:mandraski@wisc.edu)**

The Ecuador Field Study was the most eye-opening experience that allowed me to see healthcare systems in a different light. The trip was filled with enjoyable and educational experiences such as getting a cleansing from a shaman in Otavalo, watching a midwife care for a mother in labor, staying with a Kichwa family in the Andes, going fishing for piranha in the Amazon, and visiting a medicinal plant market in Coca. We had the opportunity to ask locals sensitive questions about their lifestyle and healthcare, and they were incredibly open and honest to help us understand and get a look into their lives.

**Lindsey Otto, [ljotto@wisc.edu](mailto:ljotto@wisc.edu)**

We got to see so many different approaches to healthcare and their impact on patients. We stayed with the most welcoming communities, learned about medicinal plants trekking through the rainforest, and the food was amazing. I wouldn't trade the experience for anything!



**WI AHEC Highlight:**  
**Morgan Platta DPH3, [mplatta@wisc.edu](mailto:mplatta@wisc.edu)**

I have an immense passion for rural health, so I actively sought out opportunities



to learn more about the underserved population in my home state! Through Wisconsin AHEC, I found hands-on learning experiences in various communities working directly with Native Americans, Amish, and rural residents. I left these experiences with numerous interprofessional connections to other motivated individuals also looking to implement change in underserved communities.



**From the Webmaster:**  
**Michelle Benson, [mbenson3@wisc.edu](mailto:mbenson3@wisc.edu)**

Thanks for making it to the end of the newsletter! If you ever have anything you want to put in, feel free to reach out!

<https://students.pharmacy.wisc.edu/pghig/>

---

Michelle Benson  
University of Wisconsin - Madison  
PharmD-MPH Dual Degree Candidate | Class of 2021  
School of Pharmacy, School of Medicine and Public Health  
(218) 750-1556